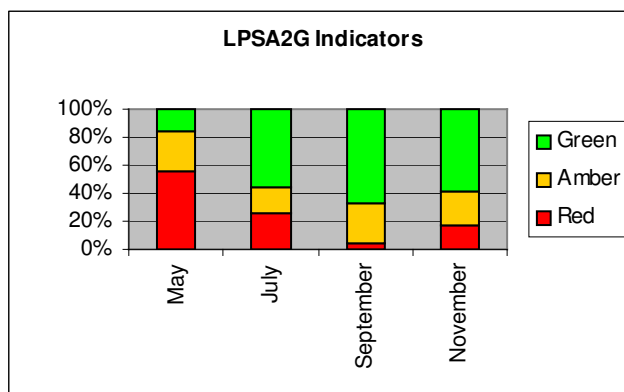


The Local Public Service Agreement (LPSA2G)

As at the end of November **4** indicators are marked **R**, compared to 1 at the end of September. The 4 indicators are HCS 15 'No. of emergency unscheduled hospital bed days occupied by a person 75 and over', HCS 30 '% of pupils achieving 5 or more GCSEs at grades A* - G or equiv. including Maths and English (LEA schools)', HCS 42b 'No. of criminal damage incidents' and HCS 45 'No. of violent crimes'. The assessment for HCS 15 is based on information from the PCT suggesting unreliability in the collection of data, HCS 42b and HCS 45 has been based on data figures for the first 6 months of the year, which shows performance is below target. Although West Mercia Constabulary are suggesting performance will improve before year-end, based on current figures many targets will not be achieved.

In the report to September HCS 17 'Satisfaction with homecare services' had been assessed as **R** because there was a lack of understanding of the indicator guidance against which a baseline could be established. Communication is ongoing with GOWM to obtain further guidance, and the assessment has now moved to **A** to reflect increased belief that the survey results will be capable of being used to establish the baseline.

The following chart shows the change in the proportions marked as **G**, **A** and **R**.



The Local Area Agreement (LAA)

At the end of November **6** indicators have been assessed as **R**, compared to 13 at the end of September. The reason for the drop in the number of indicators assessed as **R** between reports is explained by reference to paragraphs 3-6 of the main report, and the 'removal' of a number of indicators for the purposes of in-year reporting. In terms of real performance, there has been little change against the LAA since the last report to September.

